



CITROËN DISPATCH



CITROËN  
DISPATCH  
ABOVE STANDARD  
ISSUE



**ABOVE STANDARD ISSUE.** WHEN OUR DESIGNERS SAT DOWN TO REDRAW THE CITROËN DISPATCH RANGE WE MADE SURE THEY TICKED EVERY BOX.

IT LOOKS GREAT TOO! DYNAMIC STYLING WITH ROBUST PROTECTION. AND INSIDE? ERGONOMICS, SUPERIOR COMFORT AND SOUNDPROOFING ENOUGH TO MAKE EVEN THE MOST CRITICAL CREW MEMBER HAPPY.



### › OPTIMAL COMFORT

The ergonomic design of the driver's seat guarantees excellent body posture and offers maximum comfort even during long periods of driving. To find the most comfortable driving position, the seat back is adjustable, while the seat cushion can be adjusted for length and height.

### › ENJOYABLE CONSISTENT RIDE

The adjustable pneumatic rear suspension, optional on diesel Panel Vans, Enterprise and Combi models, guarantees optimal road holding and a constant ride height under all load conditions. This system also maintains a constant overall height of less than 1.90m, i.e. below the standard minimum limit for entrances to underground car parks. Lastly, the manual control for adjustment of the load sill offers incomparable convenience by allowing a reduction of the rear sill height to 49cm; the ride height returns to normal automatically as soon as the speed reaches 6mph.

	PANEL VAN		ENTERPRISE	COMBI		PLATFORM CAB
	VAN	XTR+		COMBI	COMBI SX	
<b>ENGINE AVAILABILITY</b>						
HDi 90 manual L1H1 1000	•		•			
HDi 120 6-speed manual L1H1 1000	•		•			
HDi 90 manual L1H1 1200	•					
HDi 120 6-speed manual L1H1 1200	•	•				
HDi 120 6-speed manual L2 1200						•
HDi 90 manual L2H1 1200	•					
HDi 120 6-speed manual L2H1 1200	•		•			
HDi 90 manual L2H2 1200	•					
HDi 120 6-speed manual L2H2 1200	•					
HDi 90 manual L1H1				•		
HDi 120 6-speed manual L1H1				•		
HDi 90 manual L2H1				•		
HDi 120 6-speed manual L2H1				•		
HDi 120 6-speed manual L1H1 SX					•	
HDi 120 6-speed manual L2H1 SX					•	
HDi 136 6-speed manual L2H1 SX					•	

TAKE SOME TIME TO CHECK OUT HOW EASY IT IS TO PUT TOGETHER YOUR PERFECT CITROËN DISPATCH. ENJOY!



Polar White



Imperial Blue



Black



Passion Red<sup>1</sup>



Pacific Blue<sup>1</sup>



Iron Grey (pearlescent)



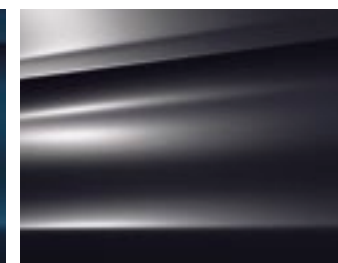
Arctic Steel (metallic)



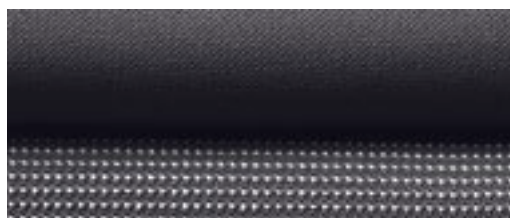
Golden White (metallic)<sup>2</sup>



Kyanos Blue (metallic)<sup>2</sup>

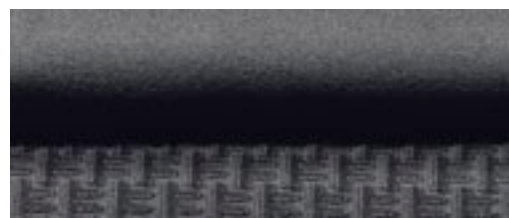


Gunmetal (metallic)<sup>2</sup>



Panel Vans, Enterprise, Platform Cab & Combi

'Transcodage' cloth



Combi SX

'Jocaste' velour

Please note: Colours and pictures shown are for illustration purposes only. Please consult your Dealer for definitive colour and trim/upholstery details.

<sup>1</sup> Not available on Combi and Combi SX models.

<sup>2</sup> Available on Combi and Combi SX models only.

15" STEEL WHEELS  
Set of four  
Tyres: 215/65 R15

VAN	XTR+	ENTERPRISE	COMBI	COMBI SX	PLATFORM CAB
• <sup>1</sup>		• <sup>1</sup>			



16" STEEL WHEELS  
Set of four  
Tyres: 215/60 R16

VAN	XTR+	ENTERPRISE	COMBI	COMBI SX	PLATFORM CAB
• <sup>2</sup>	• <sup>3</sup>	• <sup>2</sup>	•		•



16" 'NARCISSE'  
WHEEL COVERS  
Set of four  
Tyres: 215/60 R16

VAN	XTR+	ENTERPRISE	COMBI	COMBI SX	PLATFORM CAB
			○ <sup>2</sup>	•	



16" 'VIVACE'  
ALLOY WHEELS  
Set of four  
Tyres: 215/60 R16

VAN	XTR+	ENTERPRISE	COMBI	COMBI SX	PLATFORM CAB
			○	○	



OPTION SUMMARY	PANEL VAN			COMBI		
	VAN	XTR+	ENTERPRISE	COMBI	COMBI SX	PLATFORM CAB
Front fog lights	○ <sup>5</sup>	○ <sup>5</sup>		○ <sup>5</sup>	•	○ <sup>5</sup>
Rear parking sensors	○ <sup>6</sup>	○ <sup>6</sup>	•	○	○ <sup>6</sup>	
<b>Connecting Box</b> – Bluetooth® system with USB socket	○ <sup>7/8</sup>	○ <sup>7/8</sup>	• <sup>7</sup>	○ <sup>7</sup>	○ <sup>7</sup>	○ <sup>7/8</sup>
Air conditioning with electrically adjustable and heated twin lens door mirrors	○	○	•	• <sup>9</sup>	•	○
Electrically adjustable and heated twin lens door mirrors	○	○	•	• <sup>9</sup>	•	○
Full steel bulkhead	○ <sup>10</sup>	○ <sup>10</sup>	•			
Full steel bulkhead with inset window	○ <sup>10</sup>	○ <sup>10</sup>				
Cruise control with driver adjustable speed limiter	○	○	○		○	○
Electronic Stability Programme (ESP) with traction control and cruise control with driver adjustable speed limiter	○ <sup>11</sup>	○	○ <sup>11</sup>	○	○	○
Individual front passenger seat	◆	◆	◆	◆		◆
Delete row 2 seats				◆	◆	
Front passenger's airbag	○	○	○	○	•	○
Passenger, side & curtain airbags with individual front passenger seat and armrest				○	○	
Row 3 removable dual passenger bench and individual passenger seat						○ <sup>12</sup>
Row 2 removable fold and tilt dual passenger bench and individual passenger seat						○ <sup>12</sup>
Row 3 removable fold and tilt dual passenger bench and individual passenger seat				○		
Anti-theft alarm	○	○	○	○	○	○
<b>Visibility Pack</b> – automatic illumination of headlamps, automatic rain-sensitive windscreen wipers and front fog lights	○ <sup>10</sup>	○ <sup>10</sup>			•	○ <sup>10</sup>
<b>MyWay</b> – colour satellite navigation, auxiliary socket, live traffic information, European mapping and Bluetooth® system					○ <sup>7</sup>	
<b>MyWay and Visibility Pack</b>				○ <sup>7</sup>		
Automatic air conditioning					○	
Cabin and rear air conditioning with Webasto non-programmable heating					○ <sup>13</sup>	
Rear air conditioning with Webasto non-programmable heating					○ <sup>14</sup>	○
Twin glazed rear doors with rear heated windows and wash-wipe	○ <sup>10</sup>	○ <sup>10</sup>		○		
Tailgate with rear heated window and wash-wipe				○ <sup>15</sup>	• <sup>15</sup>	
Tailgate with rear heated window, wash-wipe and dark tinted windows in row 3				○ <sup>15</sup>		

OPTION SUMMARY	PANEL VAN			COMBI		
	VAN	XTR+	ENTERPRISE	COMBI	COMBI SX	PLATFORM CAB
Dark tinted windows in row 3						○
<b>Look Pack</b> – body colour partially painted front and rear bumpers, front fog lights, black manually adjustable twin lens door mirrors and black side rubbing strips	○ <sup>16</sup>	○ <sup>16</sup>				○ <sup>16/17</sup>
<b>Look Pack</b> – body colour partially painted front and rear bumpers, body colour electrically adjustable, heated and folding twin lens door mirrors and black side rubbing strips				○ <sup>16</sup>	○	
16" 'Narcisse' wheel covers (set of four)				○ <sup>18</sup>	•	
16" 'Vivace' alloy wheels (set of four)				○	○	
Front metallic suspension and rear pneumatic suspension, adjustable when vehicle is stationary	○		○	○	○	
Converter socket	○	○	○	○	○	•
Metallic/Pearlescent paint	○	○	○	○	○	○
Special order paint (Fleet colours)	○ <sup>16</sup>	○ <sup>16</sup>	○ <sup>16</sup>	○ <sup>16</sup>		○ <sup>16</sup>
Special order paint (derogation colours)	○ <sup>16</sup>	○ <sup>16</sup>	○ <sup>16</sup>	○ <sup>16</sup>		○ <sup>16</sup>

- Standard equipment
- ◆ No cost optional factory fitted equipment
- Optional factory fitted equipment

- On 1000 L1H1 HDi 90hp model only.
- Excludes 1000 L1H1 HDi 90hp model.
- Michelin Agilis S4 tyres.
- Available as part of optional Look Pack.
- Available only as part of optional Visibility Pack or Look Pack.

- Includes electrically adjustable, heated and folding twin lens door mirrors.
- Mobile phone compatibility can vary by phone manufacturer. Please consult your Dealer for further compatibility information.
- Available in late 2011.
- Standard on HDi 90; optional on other models.

- Interior rear view mirror is standard if Visibility Pack is ordered, or if glazed rear doors are ordered with or without full steel bulkhead with inset window.

- Not available on 1000 L1H1 HDi 90 model.
- Row 2 removable fold and tilt dual passenger bench and individual passenger seat is not compatible with row 3 removable dual passenger bench and individual passenger seat.
- Available only on HDi 120 models.
- Available only on HDi 90 models.
- Tailgate and special order paint are not compatible. If tailgate is ordered in conjunction with special order paint, that tailgate will be primed and not painted.
- Look Pack and special order paint are not compatible.
- Rear bumper not present.
- When optional Look Pack is ordered, 'Narcisse' wheel covers are present.

# CITROËN DISPATCH EQUIPMENT SPECIFICATION

- Standard equipment
- ◆ No cost option
- Optional factory fitted equipment

<sup>1</sup> Available only as part of optional Visibility Pack or Look Pack.

<sup>2</sup> Interior rear view mirror is standard if MyWay and Visibility Pack option is ordered, or if glazed rear doors are ordered with or without full steel bulkhead with inset window.

<sup>3</sup> When MyWay is ordered, Visibility Pack is included.

<sup>4</sup> Standard on HDi 90 models only; optional on HDi 120 models.

<sup>5</sup> Includes electrically adjustable, heated and folding twin lens door mirrors.

<sup>6</sup> On 1000 L1H1 HDi 90 models only.

<sup>7</sup> Excludes 1000 L1H1 HDi 90 model.

<sup>8</sup> When optional Look Pack is ordered, 'Narcisse' wheel covers are present.

<sup>9</sup> 8 anchorage points on Panel Vans and Enterprise and 6 anchorage points on Combi models.

<sup>10</sup> L1H1 and L2H2 versions have 5 anchorage points each side and L2H1 versions have 6 anchorage points each side.

<sup>11</sup> Includes front passenger's airbag.

<sup>12</sup> Mobile phone compatibility can vary by phone manufacturer. Please consult your dealer for further compatibility information.

<sup>13</sup> Available in late 2011.

	PANEL VAN			COMBI		
	VAN	XTR+	ENTERPRISE	COMBI	COMBI SX	PLATFORM CAB
<b>SAFETY &amp; SECURITY</b>						
ABS	●	●	●	●	●	●
Emergency Braking Assistance (EBA)	●	●	●	●	●	●
Driver's airbag	●	●	●	●	●	●
Ladder frame bulkhead	●	●				
Full steel bulkhead	○	○	●			
Warning light and audible warning system for driver's 'unfastened' seat belt	●	●	●	●	●	●
Transponder immobiliser	●	●	●	●	●	●
High-frequency remote control central locking with deadlocks and dashboard mounted control	●	●	●	●	●	●
Height-adjustable front seat belts	●	●	●	●	●	●
Three-point inertia reel seat belts on all seats	●	●	●	●	●	●
Front passenger's airbag	○	○	○	○	●	○
<b>LIGHTING &amp; VISIBILITY</b>						
Front fog lights	○ <sup>1</sup>	○ <sup>1</sup>		○ <sup>1</sup>	●	○ <sup>1</sup>
Rear fog light with twin reversing lights	●	●	●	●	●	●
Height-adjustable headlamps	●	●	●	●	●	●
Automatic illumination of cabin lighting via a ceiling mounted button	●	●	●	●	●	●
Two-speed and intermittent speed-sensitive wipers	●	●	●	●	●	●
Load compartment light	●	●	●	●	●	●
Interior rear view mirror	◆ <sup>2</sup>	◆ <sup>2</sup>		●	●	◆ <sup>2</sup>
<b>Visibility Pack</b> – automatic illumination of headlamps, automatic rain-sensitive wipers, front fog lights and multi-function on-board trip computer	○	○		○ <sup>3</sup>	●	○
Air conditioning with electrically adjustable and heated twin lens door mirrors	○	○	●	● <sup>4</sup>	●	○
<b>COMFORT &amp; CONVENIENCE</b>						
Rear parking sensors	○ <sup>5</sup>	○ <sup>5</sup>	● <sup>5</sup>	○ <sup>5</sup>	○ <sup>5</sup>	
Variable power assisted steering	●	●	●	●	●	●
Driver's and passenger's sunvisor	●	●	●	●	●	●
Height and reach adjustable steering wheel	●	●	●	●	●	●
Front electric windows with 'one-touch' operation and anti-pinch	●	●	●	●	●	●
Sliding side windows in row 2				●	●	
12 volt socket on centre console	●	●	●	●	●	●
12 volt socket in load compartment/row 2	●	●	●	●	●	
12 volt socket in row 3					●	
Converter socket	○	○	○	○	○	●

	PANEL VAN			COMBI		
	VAN	XTR+	ENTERPRISE	COMBI	COMBI SX	PLATFORM CAB
<b>STYLE EXTERIOR</b>						
Side rubbing strips	●	●	●	●	●	●
Tinted windows	●	●	●	●	●	●
15" steel wheels (215/65 R15)	● <sup>6</sup>		● <sup>6</sup>			
16" steel wheels (215/60 R16)	◆ <sup>7</sup>		◆ <sup>7</sup>			●
16" 'Narcisse' wheel covers (set of four)				○ <sup>8</sup>	●	
16" steel wheels (215/60 R16) with Michelin Agilis S1 tyres (set of four)		●				
Twin unglazed rear doors	●	●	●			
Twin glazed rear doors				●		
Tailgate with rear heated window and wash-wipe				○	●	
Twin sliding side loading unglazed doors	●	●	●			
Twin sliding side loading glazed doors				●	●	
<b>DRIVER INFORMATION</b>						
Lockable fuel cap	●	●	●	●	●	●
Rev counter	●	●	●	●	●	●
Trip and total mileage recorders	●	●	●	●	●	●
Hazard warning light	●	●	●	●	●	●
Fuel gauge	●	●	●	●	●	●
Oil level indicator	●	●	●	●	●	●
Low battery charge warning light	●	●	●	●	●	●
Indicator warning light	●	●	●	●	●	●
Handbrake warning light	●	●	●	●	●	●
Side headlamps and main beam warning lights	●	●	●	●	●	●
Brake fluid warning	●	●	●	●	●	●
Metallic suspension	●	●	●	●	●	●
<b>STORAGE</b>						
Overhead storage shelf	●	●	●	●	●	●
Lockable glove box	●	●	●	●	●	●
Door pockets with bottle holders	●	●	●	●	●	●
Floor mounted anchorage points	● <sup>9</sup>	● <sup>9</sup>	● <sup>9</sup>	● <sup>9</sup>	● <sup>9</sup>	
Anchorage points on each side of the roof (max load 170kg)	● <sup>10</sup>	● <sup>10</sup>	● <sup>10</sup>	● <sup>10</sup>	● <sup>10</sup>	

	PANEL VAN		ENTERPRISE	COMBI		PLATFORM CAB
	VAN	XTR+		COMBI	COMBI SX	
<b>SEATING</b>						
Height-adjustable front head restraints	•	•	•	•	•	•
Height-adjustable driver's seat	•	•	•	•	•	•
6 seats				•		
9 seats					•	
Dual passenger bench seat	•	•	•	•	• <sup>11</sup>	○
Individual front passenger seat	◆	◆	◆	◆		◆
Delete row 2 seats				◆	◆	
<b>AUDIO/NAVIGATION</b>						
Connecting Box – Bluetooth® system with USB socket	○ <sup>12/13</sup>	○ <sup>12/13</sup>	• <sup>12</sup>	○ <sup>12</sup>	○ <sup>12</sup>	○ <sup>12/13</sup>
RDS stereo radio/MP3 compatible CD player with steering mounted controls	•	•	•	•	•	•
Smartnav with Trackstar Stolen Vehicle Tracking	•	•	•			



# CITROËN DISPATCH

## DIMENSIONS & WEIGHTS



Up to 1188kg  
payload on Panel Vans



Up to 7m<sup>3</sup>  
of loadspace  
on Panel Vans

	VAN, ENTERPRISE & COMBI				PLATFORM CAB
	L1	L2		L1H1	
	H1	H1	H2	XTR+	
<b>EXTERIOR DIMENSIONS (mm)</b>					
Length	4805	5135	5135	4805	5016
Height (empty) – metallic suspension	1942	1942	2276	1972	
Height (empty) – adjustable pneumatic rear suspension at nominal setting	1894	1894	2204		
Width (excluding door mirrors)	1895	1895	1895	1895	1895
Width (with door mirrors folded)	1986	1986	1986	1986	1986
Width (with door mirrors unfolded)	2194	2194	2194	2194	2194
Wheelbase	3000	3122	3122	3000	3122
Front overhang	975	975	975	975	975
Rear overhang	830	1038	1038	830	920
Front and rear track	1574	1574	1574	1574	1574
<b>LOAD COMPARTMENT DIMENSIONS (mm)</b>					
Load sill height (empty) – metallic suspension	562-604	562-604	562-604	592-634	
Load sill height (empty) – adjustable pneumatic rear suspension	491-500	491-500	491-500		
Load length	2254	2584	2584	2254	
Maximum load compartment height	1449	1449	1750	1449	
Maximum load width between sides	1600	1600	1600	1600	
Maximum load width between wheel arches	1245	1245	1245	1245	
Sliding side door height	1293-1301	1293-1301	1293-1301	1293-1301	
Sliding side door width	924	924	924	924	
Rear door height	1272	1272	1630	1272	
Rear door width (min)	1237	1237	1237	1237	
Degree to which rear doors open	90°/180°	90°/180°	90°/180°	90°/180°	
Load compartment volume (m <sup>3</sup> )	5	6	7	5	
<b>CONVERTIBLE AREA DIMENSIONS (mm)</b>					
Usable platform length (behind the cab)					2618
Maximum width of conversion					2100
Maximum interior width between wheel arches					1245

	GVW	KERB WEIGHT	MAXIMUM PAYLOAD*	MEDIAN MASS IN SERVICE	MAX PERMITTED WEIGHT ON FRONT AXLE**	MAX PERMITTED WEIGHT ON REAR AXLE**	MAX TRAILER <sup>▲</sup>	GTW
<b>WEIGHTS &amp; PAYLOADS (kg)</b>								
PANEL VAN								
1000 L1H1 HDi 90	2661	1673	988		1400	1700	1672	4333
1000 L1H1 HDi 120	2702	1714	988		1400	1700	2000	4702
1200 L1H1 HDi 90	2861	1673	1188		1400	1700	1472	4333
1200 L1H1 HDi 120	2902	1714	1188		1400	1700	1998	4900
1200 L1H1 HDi 120 XTR+	2902	1739	1163		1400	1700	1998	4900
1200 L2H1 HDi 90	2880	1692	1188		1400	1700	1453	4333
1200 L2H1 HDi 120	2932	1744	1188		1400	1700	1968	4900
1200 L2H2 HDi 90	2900	1712	1188		1400	1700	1433	4333
1200 L2H2 HDi 120	2963	1775	1188		1400	1700	1937	4900
COMBI								
HDi 90 manual L1H1	2683	1911	772	2017	1400	1550	2000	4333
HDi 120 6-speed manual L1H1	2759	1913	846	2036	1400	1550	2000	4510
HDi 90 manual L2H1	2737	1969	768	2061	1400	1550	2000	4333
HDi 120 6-speed manual L2H1	2791	1930	861	2053	1400	1550	2000	4510
HDi 120 6-speed manual L1H1 SX	2759	1913	846	2036	1400	1550	2000	4510
HDi 120 6-speed manual L2H1 SX	2791	1930	861	2053	1400	1550	2000	4510
HDi 136 6-speed manual L2H1 SX	2805	1944	861	2067	1400	1550	2000	4780
PLATFORM CAB								
1200 L2 HDi 120	2963	1565	1398**		1400	1700	1937	4900

\* Includes driver.

\*\* Includes bodywork.

▲ On Combi models, trailer weight must be reduced if vehicle is running at GVW to ensure that GTW is not exceeded.

# CITROËN DISPATCH TECHNICAL SPECIFICATION

	DIESEL MODELS		
	HDi 90 manual	HDi 120 6-speed manual	HDi 136 6-speed manual
<b>ENGINE</b>			
Capacity (cc)	1560	1997	1997
Cylinders	4 in line	4 in line	4 in line
Bore and stroke (mm)	75.0 x 88.3	85.0 x 88.0	85.0 x 88.0
Max power CEE (kW/rpm)	66/4000	88/4000	100/4000
Max torque CEE (Nm/rpm)	180/1750	300/2000	320/2000
Fuel system	High pressure direct diesel injection		
Euro Status	Euro 4	Euro 4	Euro 4
<b>TRANSMISSION</b>			
Five speed manual	•		
Six speed manual		•	•
<b>ECONOMY Litres/100km (mpg)</b>			
Combined	7.2 (39.2)	7.2/7.6 (39.2/37.2)*	7.3 (38.7)
<b>CO<sub>2</sub> EMISSIONS (g/km)</b>			
	191	194/200*	194
<b>BRAKES</b>			
	ABS with Emergency Braking Assistance (EBA)		
Front brakes/Rear brakes	1000 L1H1 1.6HDi 90hp – front discs, rear drums. All other models – front and rear discs		
<b>STEERING</b>			
	Variable power assisted steering		
Number of turns lock to lock	3.87		
Turning circle between kerbs (m) L1/L2	12.2/12.6		
<b>SUSPENSION</b>			
Metallic front suspension	Independent MacPherson type struts with triangulated lower suspension arms and anti-torsion bar		
Metallic rear suspension	Independent trailing arm suspension with semi-deformable crossmember, coil springs and inclined hydraulic dampers		
Pneumatic rear suspension	Independent trailing arm suspension with semi-deformable crossmember, pneumatic springs at a constant height and inclined hydraulic dampers with bump stops		
<b>FUEL TANK CAPACITY Litres (gallons)</b>			
	80 (17.6)		



6 speed manual  
transmission  
on HDi 120 & HDi 136 models

\* Min/max figures.

# GREEN EFFICIENCY. CITROËN HAS BEEN PIONEERING CLEANER, MORE FUEL-EFFICIENT MOTORING, SUCH AS THE COMMON RAIL HDi ENGINES NOW FITTED IN ALL NEW CITROËN DIESELS, LONG BEFORE ALL THE HYPE...

CITROËN HAS ALWAYS BEEN AT THE FOREFRONT OF GREENER TECHNOLOGY AND THE CITROËN DISPATCH MAINTAINS THAT TRADITION. IT'S WHY WE HAVE WON THE FLEETVAN GREEN LCV MANUFACTURER OF THE YEAR 2010 AWARD. TODAY, WE HAVE ONE OF THE UK'S WIDEST RANGES OF LOW EMISSION VEHICLES. WE ALSO PRODUCE ONE OF THE UK'S MOST ECONOMICAL LIGHT COMMERCIAL VEHICLES, THE CITROËN NEMO VAN.



Citroën is a leader in the manufacture of low CO<sub>2</sub> emissions vehicles



**GO LO CO<sub>2</sub> WITH B30**  
All Citroën HDi diesel vans run on 30% bio-diesel



## › ELECTRIFYING. HOWEVER YOU LOOK AT IT

Forget what you know about electric cars. Citroën Survolt combines undiluted glamour with advanced sporting dynamics, then adds a 100% electric drivetrain. Outside, LED lights, voluptuous curves, two-tone charcoal and fuchsia paintwork, and a race-inspired rear spoiler meet your gaze. Inside, a stunning blend of curved chrome, swooping glass, high technology and organic forms welcomes you to an entirely new place. But this is no simple styling exercise. At heart, Survolt is even more radical, because although it is designed to thrill, it is powered purely by silent, efficient, clean electricity.

## › AIRDREAM – A BENCHMARK

When it comes to the environment we wanted to show our genuine commitment as well as our profound expertise, so we have devised a benchmarking scheme with the signature 'Airdream'. To qualify for the Airdream signature, vehicles must have an e-HDi engine.

# DRIVE YOUR WAY.

GET BEHIND THE WHEEL OF YOUR NEW CITROËN DISPATCH, WITH CITROËN'S RANGE OF FINANCE AND INSURANCE PRODUCTS.

## FOR BUSINESS USERS

### CITROËN CONTRACT MOTORING HIRE PURCHASE

A tried and tested finance package that allows you to own your vehicle.

### CITROËN CONTRACT MOTORING BUSINESS LEASE

An alternative to vehicle ownership that allows you to control your business cash flow and gain tax efficiencies.

### CITROËN CONTRACT MOTORING LEASE PURCHASE

Own a vehicle with a finance solution that offers ultimate flexibility to complement your business cash flow.

### CITROËN CONTRACT MOTORING CONTRACT HIRE

A non-ownership finance solution that keeps costs fixed and risks low.

▶ FOR MORE INFORMATION ON CITROËN FLEET AND BUSINESS SALES, PLEASE CALL CITROËN FLEET CONNECT ON 08457 940 940 OR LOOK US UP AT [WWW.CITROEN.CO.UK/FLEET](http://WWW.CITROEN.CO.UK/FLEET)

## ▶ ESSENTIAL CARE.

CITROËNS ARE RENOWNED FOR THEIR RELIABILITY – AND THE CITROËN DISPATCH IS NO EXCEPTION. WITH THE ADDED REASSURANCE OF A WARRANTY, ROUTINE SERVICING AND MAINTENANCE, AS WELL AS 24-HOUR ROADSIDE ASSISTANCE, YOU ARE PROTECTED.

### CITROËN WARRANTY

Every new Citroën van has the benefit of a 3 year\* warranty package, plus a 5 year anti-perforation\*\* warranty and a 2 year paint warranty.

\* 2 years' unlimited mileage manufacturer's warranty. No-fee customer option of 1 year's Dealer provided warranty, only on vans sourced from Citroën UK Limited. Note: Dealer provided warranty is limited to 100,000 miles for vans.

\*\* Against all internal to external perforation to bodywork or underbody.

### CITROËN ASSISTANCE

For all models except Citroën C6: In response to a free telephone call in the UK, Citroën Assistance brings rapid expert roadside assistance to you in an emergency. It comes free of charge for a full year and operates 24 hours a day in all parts of the UK and Europe. Services include nationwide recovery for both van and passengers, a home call service, replacement vehicle, hotel accommodation and vehicle storage if required. Please note, Citroën Assistance only applies to incidents covered by the new vehicle warranty, and excludes non-vehicle faults, such as running out of fuel, mis-fuelling, loss of keys, lock-ins, road traffic accidents and punctures/wheel changes. Citroën C6: Citroën Assistance covers all incidents and for a period of 3 years. Full details are available on request from Citroën UK via [cuk\\_contactcentre@citroen.com](mailto:cuk_contactcentre@citroen.com)

### CITROËN MAINTENANCE

From roadside assistance to replacing wear and tear parts or regular servicing, with Citroën Maintenance you have total peace of mind. For a one-off fee or low monthly payment, our experienced engineers will take care of your Citroën, whatever happens. To find out more, contact your Citroën Dealer or Citroën Authorised Repairer.

### CITROËN SERVICING

Available up to 1 year from your vehicle's registration date, but before its first chargeable service, a Citroën Servicing Package enables you to pay in advance for your vehicle's servicing needs for 3 years/35,000 miles. For further information, please contact your Citroën Dealer.

### CITROËN EXTENDED WARRANTY

With a Citroën Extended Warranty, we offer you the opportunity to continue your care-free motoring for a further 1 or 2 years beyond the 3 year warranty and up to 120,000 miles.

To find out more, contact your Citroën Dealer or call the Customer Contact Centre on 0844 463 3500.

Extended Warranty insurance is underwritten by Pinnacle Insurance Plc which is authorised and regulated by the Financial Services Authority.

## CITROËN INSURANCE

### CITROËN INSURANCE INSTANT COVER

To help you drive away your new van without delay, we offer Instant Cover insurance, providing you with 7 days comprehensive van insurance, for free!

### CITROËN INSURANCE MOTOR INSURANCE

Citroën Insurance has been designed specifically for our vehicles. You don't just get repairs you get Citroën expertise, service, quality and parts.

So, when the time comes to renew your insurance cover, call Citroën Insurance on 0870 024 2725.

Lines open 8am - 8pm weekdays, 9am - 5pm Saturdays. Max call charge from a BT landline is 8p per minute. Calls from other networks may vary. Alternatively, visit [www.citroen.co.uk](http://www.citroen.co.uk) for more information or to apply online.

Citroën Insurance is underwritten by UK Insurance Ltd which is authorised and regulated by the Financial Services Authority. Citroën Insurance is a trading style of Banque PSA Finance UK of Quadrant House, Princess Way, Redhill, Surrey, RH1 1QA.



This brochure is made from paper from a well-managed forest. Citroën support responsible use of forest resources.

Please don't throw me away, give me to a friend or recycle me.

NOTE: Every endeavour has been made to ensure that the information and details contained in this brochure were accurate at the time of going to press June 2011. However the company reserves the right, whilst preserving the essential characteristics of the models described, to introduce at any time modifications, changes of details or equipment. Every effort will be made to bring this brochure up to date, but in order to avoid any misunderstandings please consult your Dealer. For full details of Citroën Care for Van and Driver, please see the full manufacturer's price list. The Citroën Website contains full information on all Citroën products and offers available in the UK, together with details of our environmental and recycling policies. The site address is: [www.citroen.co.uk](http://www.citroen.co.uk) or you can contact Citroën directly via [cuk\\_contactcentre@citroen.com](mailto:cuk_contactcentre@citroen.com)

**CITROËN prefers TOTAL**

CITROËN UK Ltd. 221 Bath Road, Slough SL1 4BA.  
[www.citroen.co.uk](http://www.citroen.co.uk)

CRÉATIVE TECHNOLOGIE

